

CONVERT 1 PC INTO MULTIPLE WORKSTATIONS WITH SOFTXPAND !!

SAVE \$\$\$



IMPROVE WORK PRODUCTIVITY!!

INSTANT
MANAGER ACCESS
TO
WORKSTATIONS

WHAT IS SOFTXPAND?

- SoftXpand Professional is a unique patented software solution that can turn a single Windows XP Pro - based computer into up to 8 fully independent computer workstations, using ONLY standard monitors, USB keyboards and mice.
- Each workstation behaves as a separate, completely independent user, with its own user ID and password, folders, settings and customized environment. It operates exactly in the same manner as it would in a Windows network.



- A cluster is formed by adding extra video cards and RAM to a standard CPU, and connecting a monitor, a keyboard and a mouse for each workstation. An entire network of PCs can be created by linking together clusters on a local area network.



- SoftXpand allows a manager with administrative access (password) to view any screen within the network as if he were physically present at that workstation.

BENEFITS

Major Cost Savings

Reduce your computer system cost by more than 50%!

- **CPU hardware costs:** You only need 1 PC instead of 8
- **Peripheral hardware:** Share any hardware installed on the PC (printers, scanners, cameras, etc) with the other workstations.
- **Software Licenses costs:** Install your licensed software such as Microsoft Office on 1 PC and make them available to all users.
- **Maintenance overhead:** Maintenance and upgrade is performed on a single instead of multiple PCs, with savings in replacement hardware, IT staff overtime and downtime.
- **Energy consumption:** Fewer computers, lower electricity consumption, and less heat. Do your bit for global warming.

Enhance Operational Efficiency

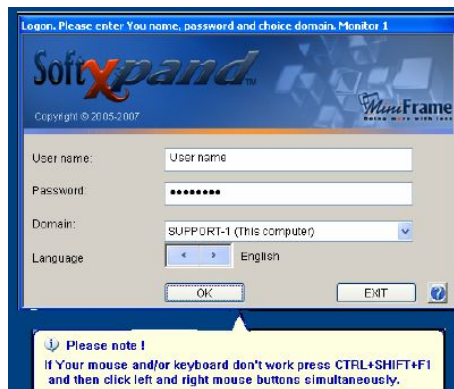
- **Supervisor console assistance:**

The console feature allows a user with the necessary level of authority, to access, view and if necessary intervene from the comfort of his own desk, any of the screens of the other workstations on the network.

This feature is useful for instructors in PC-based learning classes or for managers who are able to provide assistance to staff working on their computers, eg helping new staff. It enables them to respond much faster to calls for help, as well as saves them the time spent going around to the staffs' desk .

Ease of Use and Administration

- **User Friendly:** SoftXpand is extremely user friendly. Users just log in their user ID and password, just like they would in the Windows environment, and they are ready to go.



• **Full Windows integration:** SoftXpand is fully integrated in the Windows XP environment and supports any application able to run in it.

eg:

- Workstations can run as thin clients (i.e., in Terminal Services environment), fat clients or regular PCs.

- Maintenance and repair of all the workstations in a cluster or any PC in a network can be carried out from the system administrator's desk.

- Folder access rights can be granted so that users' content is private on each workstation.

UNIQUE TECHNOLOGY

The newly- patented technology is based on intelligent CPU and GPU balancing system. SoftXpand software balances the host PC resources between the computer's CPU and the video cards' GPU. Those resources are distributed between the workstations according to their needs.

Consequently, SoftXpand lets you work with multimedia applications on multiple workstations without any degradation in performance.

For further information, contact:

SME International Business Support Pte Ltd
51, Anson Road, Anson Centre, #09-51A
Singapore 079904
Email: enquiries@smeintl.com.sg

Tel: 91790790